

 **GAMUDA**

ESG

PULSE



This is an Artificial Intelligence (AI)-generated image.

THE SOCIAL BLUEPRINT:

GAMUDA'S PATH TO INCLUSIVE SUSTAINABILITY

This edition provides a comprehensive overview of Gamuda Group's ongoing ESG initiatives and achievements, highlighting our steadfast commitment to the Gamuda Plan 2025 and compliance standards.

Gamuda's ESG activities are guided by the Social Return of Investment (SROI) framework as a transformative tool to evaluate the broader impact of our social initiatives. Based on the Principles of Social Value by Social Value International, this SROI analysis translates diverse outcomes into measurable monetary values, offering a thorough understanding of contributions beyond traditional financial metrics.

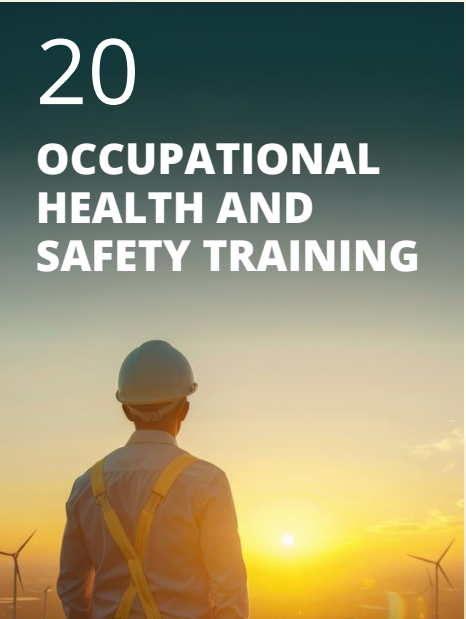
In FY2023, Gamuda undertook an SROI study to assess RM157.8 million invested in social initiatives from 2015 to 2022, with planned spending from 2023 to 2030. The analysis revealed a significant social impact of RM534.2 million, achieving an SROI ratio of 3.4.

The strategic application of the SROI framework steers Gamuda's ESG efforts, ensuring the creation of measurable value for stakeholders. These efforts can be categorised into key areas which are as follows:

KEY IMPACT AREAS	 Education And Training	 Occupational Health and Safety	 Biodiversity	 Diversity and Equal Opportunity	 Local Communities
KEY IMPACT AREAS	Improves access to education, boosts workforce skills, career prospects and income	Reduces risk and creates a healthier and safer work environment for Gamuda's workforce	Enhances the well-being and liveability of local communities that are affected by Gamuda's developments	Promotes diversity and equal opportunity for vulnerable and disadvantaged groups of people	Enhances the quality of life and development of local communities

Pioneering the use of SROI as a community investment scorecard, Gamuda stands among the first construction companies in Malaysia to adopt this innovative framework.

INSIDE THIS REPORT:



An aerial photograph of a park area. A dark, winding river flows through the center. On the left bank, there's a long, narrow wooden walkway that zig-zags across the water. The right bank features a large, curved green lawn area with a circular wooden platform in the center. Further back, there's a blue and white patterned area, possibly a playground or sports field. The foreground is a mix of green grass and trees, with a paved path running along the bottom edge.

BIODIVERSITY AND COMMUNITY GROWTH

Gamuda actively constructs communities that thrive and endure by combining cultural preservation, biodiversity, educational programmes, partnerships and sustainable design, thus forging deep connections with nature.

BIODIVERSITY REHABILITATION THROUGH THE WETLANDS ARBORETUM CENTRE (WAC)

Located beside the Paya Indah Discovery Wetlands (PIDW), the 90-acre WAC at Gamuda Cove is a thriving initiative dedicated to biodiversity. Designed to emulate the rich ecosystem of the surrounding wetlands, it serves as a living tree museum, a plant resource hub, and an edu-eco tourism destination. Over 150,000 trees have been planted, with more than 80% comprising native species and 5% being targeted species of conservation significance. As a vital national biodiversity asset, it aims to foster collaboration between environmentalists and the community to combat climate change, promote education and advance biodiversity research. Key efforts include a detailed flora survey to document plant species, highlighting those with unique traits or conservation value, and a soil carbon stock assessment to measure the peat soil's capacity for carbon storage.

In line with this commitment to sustainability, WAC has also achieved the EDGE Advanced certificate for the post-construction stage. This certification reflects remarkable accomplishments, including 100% energy savings, 85% water savings, and a 58% reduction in embodied energy compared to conventional buildings.



FIABCI (THE INTERNATIONAL REAL ESTATE FEDERATION) RECOGNITION FOR EXCELLENCE IN ECOLOGICAL RESTORATION

The WAC at Gamuda Cove earned recognition in the Environmental Category at the Malaysia Property Award™ 2024, presented by FIABCI Malaysia. A cornerstone of Gamuda Cove's rich natural attractions, it complements the public access to the nearby PIDW. Together, these ecological sanctuaries invite residents and visitors to explore the beauty of Malaysia's wetlands through immersive activities such as nature trails, birdwatching, and cultural workshops led by the *Orang Asli* community. This achievement stems from a dedicated two-year restoration project, which transformed barren land into a thriving biodiversity hub. Today, the arboretum stands as a living tree museum, championing ecological restoration.



BIODIVERSITY STUDY ADVANCING CERTIFICATION AND CONSERVATION GOALS

This year, we are undertaking a comprehensive biodiversity study at Gamuda Cove Central Park and WAC, as part of the submission process for the Malaysia Forest Fund's Forest Conservation Certificate. This study seeks to evaluate the current state of biodiversity, update species inventories, and identify key opportunities for conservation marking a significant follow-up after a five-year hiatus since the last audit.

By analysing environmental changes and formulating targeted conservation strategies, the initiative underscores Gamuda's commitment to preserving and enhancing the natural ecosystems of the WAC which neighbours the PIDW.



CELEBRATING HERITAGE AND EMPOWERING LOCAL VOICES

Gamuda Parks engages and uplifts local communities by celebrating their heritage and providing platforms for cultural exchange. The Wetlands Festival 2024, which attracted over 1,000 visitors, was a testament to our commitment. This festival highlighted Temuan *Orang Asli* traditions through captivating storytelling, music, crafts, tours and demonstrations of sustainable practices, empowering the community to share their rich cultural heritage. The Eco-glamping and playscape competitions further encourage creative, nature-based sustainable design, fostering community participation and skill development.



CULTIVATING ENVIRONMENTAL STEWARDS AND ENGAGING ALL AGES

Gamuda Parks is dedicated to shaping the next generation of environmental stewards by providing accessible and transformative learning experiences through programmes like the Gamuda Parks Academy (GPA).

The GPA offers adaptable learning experiences for all ages through sustainability-focused programmes at the Wetland Arboretum Centre (WAC), such as Gamuda Parks Urban Ecology and Biodiversity (GUEB), Nature Playhouse and GParks Youth.

The GPA's impactful outreach is evident in its extensive network: connecting with 35 primary and secondary schools, 13 corporate partners, 7 university collaborations and 8 non-profit organisation partnerships. This wide range of collaborations underscores the GPA's role as a key driver of environmental education.

The GUEB empowers Gamudians and corporate partners to become stewards of ecology and biodiversity through transformative workshops and training. We are forging meaningful connections with the land by employing 2 *Orang Asli* Temuan rangers to share their indigenous knowledge about sustainable living and biodiversity conservation, including demonstrating traditional crafts, storytelling about their heritage, and educating participants on the importance of preserving wetlands ecosystems.

Our innovative Eco-Gastronomy programme further fosters team cohesion, offering unique team-building experiences centered around hands-on culinary workshops. Participants create delicious dishes using fresh, locally sourced ingredients from the WAC's urban farm and the *Orang Asli* Village, connecting them directly to the eco-system.

Nature Playhouse showcases an exciting role-play programme that immerses children in environmental careers, inspiring curiosity and a

connection to nature. These young participants can become a farmer (*garden expert*) by stepping into the daily life of a vegetable farmer, planting seeds, nurturing crops and harvesting fresh produce. They can also explore the role of an entomologist (*insect expert*) by diving into the world of insects, uncovering their vital ecological roles through scientific tools and observation skills. This outdoor classroom transforms learning into an adventure, encouraging children to become future guardians of the environment.

GParks Youth is a membership tailored to individuals aged 18 and above, that offers members hands-on engagement in diverse events, providing practical experience and a real impact. Members receive recognition and growth through volunteer certificates, highlighting their sustainability commitment. They also gain insider access to exclusive Gamuda Parks programmes, including webinars and site visits, and benefit from community building by connecting with environmental experts and enthusiasts.

STRENGTHENING PARTNERSHIPS FOR COMMUNITY BENEFIT

Gamuda Land established partnerships through MOUs with the International Islamic University Malaysia (IIUM), Universiti Teknologi Malaysia (UTM) and Universiti Putra Malaysia (UPM). These collaborations aim to bridge the divide between academia and industry, facilitating valuable knowledge exchange and offering practical, real-world applications for ongoing research.

Specifically, the partnerships involved collaborative conservation research, focusing on the study and preservation of vulnerable forest tree species listed on the International Union for Conservation of Nature (IUCN) Red List. Furthermore, Gamuda Parks will open its facilities to students for industrial training and research, allowing them to develop expertise in areas such as landscape architecture and sustainable waste management. Gamuda Parks will also contribute its specialised industry knowledge

by serving as a key advisory panel, providing practical insights and guidance. Lastly, students will be offered the chance to participate in GParks Youth programmes, thereby encouraging youth participation in climate change advocacy.

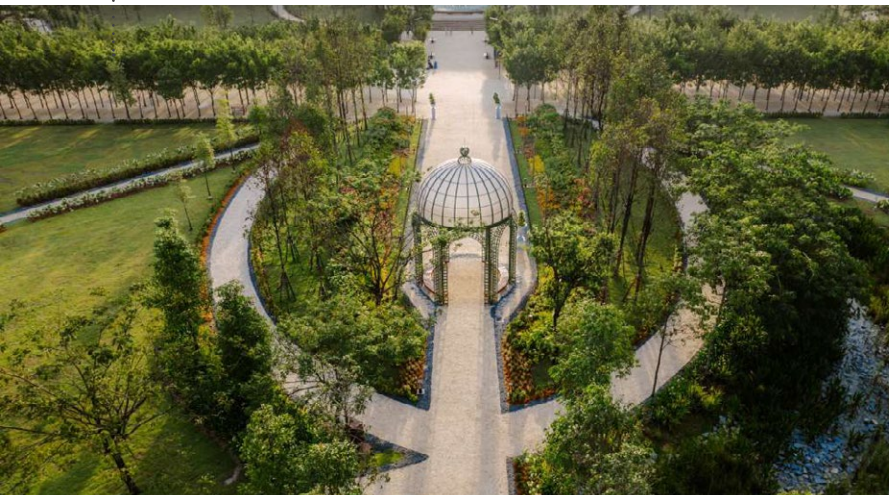


CONNECTING COMMUNITIES TO NATURE'S WONDERS

Gamuda Land's "Harmony in Diversity: Connecting People with Nature" event at Gamuda Cove served as a vibrant platform for community engagement with nature. Featuring workshops, wildlife encounters, discussions and performances, the event fostered a deeper appreciation for biodiversity and inspired community members to actively engage in protecting natural ecosystems.

CREATING GREEN SPACES FOR COMMUNITY WELL-BEING

Townsquare Park (TP) at Gamuda Cove stands as a testament to Gamuda Land's dedication to creating sustainable and accessible green spaces that enhance community vitality. This 6-acre natural oasis, with its diverse flora, including a L'OCCITANE Garden and pedestrian-friendly design, promotes active lifestyles and fosters a strong sense of community. Townsquare Park's gardens enhance local biodiversity, and conservation efforts focus on habitat creation, soil health and species survival, directly benefiting the local ecosystem and the community that relies on it.



ENHANCING BIODIVERSITY THROUGH INNOVATIVE WASTE MANAGEMENT

Our waste management approach integrates circular economy principles by repurposing organic waste into compost for landscaping, which enhances soil health and supports local biodiversity. This includes establishing a food waste centre that processes food scraps into compost, reducing greenhouse gas emissions while creating a habitat-friendly environment for native plant species. Additionally, composting yards in Gamuda Land townships convert garden waste into nutrient-rich compost, fostering biodiversity by promoting the growth of diverse flora. In Menara Gamuda, home-scale composting bins called 'Reencle' help minimise food waste sent to landfills, further contributing to waste reduction. The resulting compost is distributed among Gamuda Land employees, residents, and participating vendors, encouraging a sustainable waste cycle that nurtures ecosystems.



E-WASTE ACTION DRIVES CHANGE

Our annual E-waste campaign, held alongside Malaysia's National Environment Day, turned discarded electronics into a catalyst for change. With over 1,509.5 kilograms of old phones, laptops, and devices collected, this effort stands as a powerful testament to united action toward reducing electronic waste and protecting our planet.



GAMUDA PARKS SUPPORTS REGIONAL PUSH FOR GREENER CITIES

The ASEAN Sustainable Urbanisation Forum (ASUF) is a key platform for promoting collaboration, knowledge sharing, and capacity building among ASEAN member states, cities and stakeholders to drive sustainable urban development across the region. This year, Malaysia will host ASUF for the first time, underscoring its commitment to advancing urban sustainability. Gamuda Parks plans to actively participate in the forum, contributing innovative ideas and initiatives to support sustainable urban growth and foster a greener future for ASEAN cities.



DIVERSITY, EQUAL OPPORTUNITY AND INCLUSION ACTIVITIES

FOSTERING WELL-BEING AND CONNECTION ACROSS COMMUNITIES

Gamuda actively promotes employees' well-being by organising various activities that foster connections and strengthen community bonds. From company-wide birthday celebrations that build camaraderie and work-life balance, to the GL Friends Smash Masters badminton tournament with over 350 participants, we create opportunities for engagement and

a healthy lifestyle. Furthermore, initiatives such as the 'Kawan' Social Club in Australia, which fosters well-being for both employees and Malaysian expatriates, along with internal clubs like Toastmasters and the Sports Club, encourage teamwork, skill development and social interactions.



To educate school children on sustainable living, the Rasau Water Treatment Plant project, with the Forest Research Institute Malaysia (FRIM), Department of *Orang Asli* Development (JAKOA) and Air Selangor, organised a tree planting campaign at SK (A) Bukit Kemandol in Selangor, in support of the National 100 Million Tree Planting Campaign. There were more than 150 attendees who planted over 30 fruit trees in Sekolah Kebangsaan Asli Bukit

Kemandol and Dewan Orang Ramai Taman Desa Kemandol. FRIM donated 120 trees and gave an inspiring talk on medicinal plants, promoting sustainable lifestyles for school children.

GRADUATES SUPPORT ABORIGINAL CONSERVATION EFFORTS

Gamuda Australia graduates gained cultural understanding and conservation skills through a partnership with Deerubbin Aboriginal Lands Council (LALC) in Western Sydney, starting with a sacred site visit and an Aboriginal smoking ceremony led by conservationist Kayne Moreton. Throughout the week, graduates built 30 habitat prototypes, including bee hotels, bird boxes for kookaburras, PVC bird boxes for cockatoos, and planted 400 native seedlings donated by Gamuda, further enhancing the restoration of the local ecosystem.

This project supports Gamuda's Reconciliation Action Plan and Seeds of Growth framework while equipping graduates with skills to drive positive environmental impact. Gamuda Australia's Graduate Programme was launched in 2023 and continues to empower participants to make a positive impact on the environment while developing their professional skills.



Gamuda also places employee well-being and health at the forefront, implementing targeted education and awareness initiatives:

MENTAL HEALTH SUPPORT

Employees were trained as Mental Health First Aiders to provide immediate support and connect colleagues to resources. The course equips participants with the skills to recognise signs of mental distress, offer initial support, and guide individuals toward professional help. Training covers common mental health conditions, active listening techniques, and crisis response.



PROACTIVE HEALTH EDUCATION

A dengue awareness talk focused on prevention strategies; seizure and epilepsy education aimed at promoting first aid knowledge and reducing stigma; and cancer awareness sessions highlighting genetic risks and preventive measures to support informed decision-making.



EDUCATION AND TRAINING HIGHLIGHTS



Gamuda demonstrates its commitment to Education and Training by investing in comprehensive workforce development initiatives that enhance skills, career prospects, and sustainability awareness. These include specialised trainings such as:

LIFE CYCLE ASSESSMENT (LCA)

SIRIM STS Sdn Bhd conducted a two-day LCA course in April 2024, covering life cycle thinking, carbon management, Life Cycle Inventory Analysis, and relevant standards and criteria. The session equipped participants with the skills to conduct LCA studies effectively, aiming to minimise project environmental impacts, including greenhouse gas emissions.



FOOD LABEL LITERACY AND HEALTHY EATING

The Quality, Safety, Health and Environment (QSHE) Department organised a session on food labels, led by a nutritionist from the Ministry of Health (KKM) aimed at boosting employee health awareness. The talk emphasised the critical importance of accurate food label interpretation. He addressed common misconceptions and highlighted often-overlooked details, demonstrating their significant influence on dietary choices. Participants gained practical knowledge about ingredient lists, nutrition facts, and portion sizes, empowering them to make well-informed dietary decisions.

MATERIAL SPECIFICATION AND GOOD PRACTICES

Gamuda Land conducted a two-day training session for Gamuda's Building Unit's (GBU) Quality Team, architects and consultants on material specification, enterprise knowledge and good practices. The session covered detailed specifications for Gamuda Land developments, including building components, materials and quality best practices. Industry experts, such as Sumitomo Chemical, shared insights into effective anti-termite treatments and the list of banned hazardous chemicals in Malaysia. This training equipped participants with knowledge for building excellence and promoted the use of non-hazardous materials to minimize environmental impacts.

Furthermore, workshops on Root Cause Analysis equip employees with critical problem-solving skills, ensuring a well-rounded and highly capable workforce.



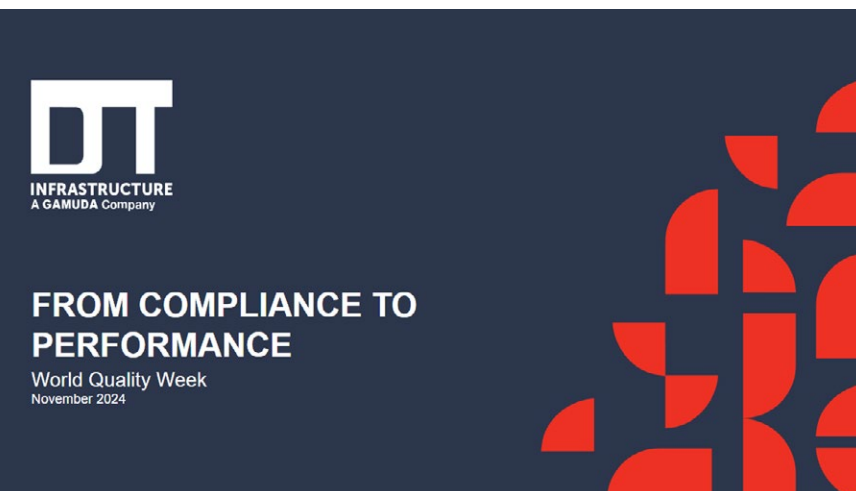
MASTERING QUALITY AND COMPLETIONS

DT Infrastructure celebrated World Quality Week in November 2024 with a Quality 101 session, "DTI Introduction to Quality & Completions," that expanded the definition of quality beyond Inspection and Test Plans (ITPs) and compliance. The session emphasised quality's role in reliable project start-ups through lifecycle assurance, explored the impact of quality failures, the cost-time-quality balance and the importance of quality ownership. Participants developed a deeper understanding of the detrimental effects of quality process failures, the essential interplay between cost, time and quality as well as the paramount importance of taking personal responsibility for quality outcomes.

COMMITMENT TO STEM EDUCATION IN PENANG

As Gamuda expands its presence in Penang through major infrastructure projects like the Penang Mutiara Line LRT and Silicon Island, it is also investing in the state's long-term human capital by supporting local STEM Talent Pipeline Development Programmes. These initiatives aim to enhance STEM education among secondary school students, equipping them with technical skills to pursue careers in science, technology, engineering, and mathematics. Launched on 29 April 2025, the programmes are part of a broader effort to future-proof Penang's youth by preparing them for the demands of an increasingly digital and technology-driven economy.

A key component of this initiative includes Gamuda's sponsorship of upper-secondary students from SMK Batu Maung to undergo Technical and Vocational Education and Training (TVET). Over two years, these students will receive after-school, hands-on training from qualified professionals, enhancing their practical skillsets and employability. Beyond direct student support, the initiative also contributes to increasing STEM enrolment and improving teacher competency, ensuring long-term programme sustainability. This effort reflects Gamuda's commitment to building a skilled local workforce and supporting the state's vision of becoming a hub for digital and technical excellence.



OCCUPATIONAL HEALTH AND SAFETY TRAINING

Gamuda prioritises Occupational Safety and Health (OSH) as a fundamental aspect of its ESG strategy. This commitment is demonstrated through comprehensive training programmes designed to equip employees and contractors with the knowledge and skills necessary to maintain safe and healthy work environments.

SAFETY AND COLLABORATIVE PARTNERSHIPS

Gamuda's approach to OSH begins with proactive measures and collaborative partnerships. Gamuda participated in Google-led workshops to align teams with the project's QSHE standards emphasising a shared commitment to achieving ZERO accidents and ZERO fatalities through precision and unwavering focus during construction.



This collaborative approach extends to internal training, such as the Hazard Identification, Assessment of Risks & Opportunities, and Controls (HIAROC) workshop, which empowers employees to identify, assess and control hazards effectively.



Additionally, the Black Card Safety, Health and Environment (SHE) Passport training was conducted for management personnel, focusing on strengthening their knowledge and leadership SHE management. The primary objective of this course was to equip project management teams with critical skills in SHE leadership, empowering them to effectively oversee workplace safety and regulatory compliance. The session emphasised proactive risk management, hazard identification and fostering a culture of safety.



EMPOWERING EMPLOYEES WITH SPECIALISED SKILLS

As part of Gamuda's commitment to professional development, the Gamuda Plant Operator School (GPOS) serves as a specialised training center dedicated to upskilling plant operators in Malaysia. Located in Shah Alam, Selangor, GPOS focuses on heavy machinery operation, ensuring safety, efficiency, and technical expertise in construction and infrastructure projects.

A key initiative within GPOS is the intensive crane handling courses, conducted by crane specialists. These comprehensive training programmes combine theoretical lessons with hands-on practical drills to enhance employees' proficiency in crane operation and safety practices. By equipping operators with industry-standard knowledge and real-world skills, GPOS plays a crucial role in promoting workplace safety and operational excellence across Gamuda's projects.

Similarly, the Gamuda Engineering-Penang South Reclamation (GE-PSR) team delivers training on slinging, rigging and load handling, strictly adhering to industry best practices.



CONTINUOUS IMPROVEMENT AND REGULATORY COMPLIANCE

Gamuda fosters a culture of continuous improvement through regular monitoring and transparent communication. The project directors lead monthly SHE Committee meetings, driving safety measures through monitoring and collaborative problem-solving.



To ensure regulatory compliance and staying abreast of industry advancements, Gamuda collaborates with the Department of Occupational Safety and Health (DOSH) through knowledge-sharing sessions, such as the meeting with DOSH headquarters officers in August 2024, to maintain regulatory compliance and remain informed about industry advancements. The DOSH shared valuable insights on their strategic planning and the formation of the National Occupational Safety and Health Performance Targets, along with its monitoring mechanism.

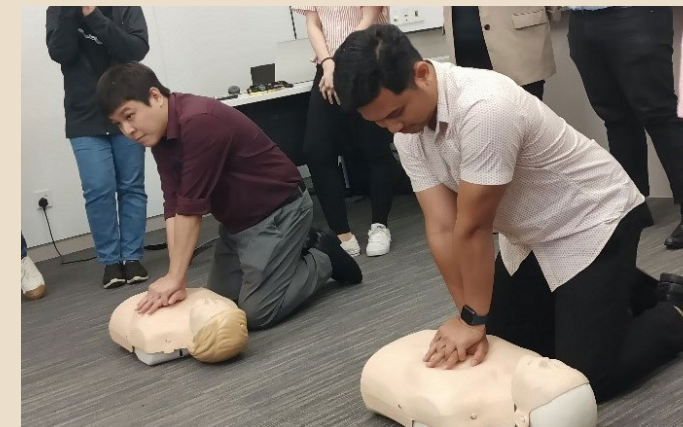


Furthermore, we conducted a productive dialogue with DOSH on the newly introduced Occupational Safety and Health Regulation for Construction Works Design and Management (OSH(CDM) Regulations 2024). To enhance understanding and facilitate implementation, the session referenced the Occupational Safety and Health in Construction Industry (Management) 2020 (OSHCIM) guidelines. These guidelines highlight how the current regulation incorporates safety and health considerations during the planning stage of a project, an aspect that was lacking in the repealed *Factories and Machinery Act & Regulation*. This shift marks a cultural change for all, as the design safety process, involving both designers and clients, now plays a major role in shaping safer construction methodologies for contractors, and ensuring secure maintenance practices for future crews responsible for buildings and structures.



EMERGENCY RESPONSE AND INTERNATIONAL COLLABORATION

Recognising the importance of emergency preparedness, Gamuda provides practical training to the Emergency Response Team (ERT) members, such as fire safety talks and fire extinguisher demonstrations, to equip them for effective responses to fire emergencies. The team also gained confidence in emergency response, specifically CPR and injury treatment, via practical drills during the CERT Academy training.



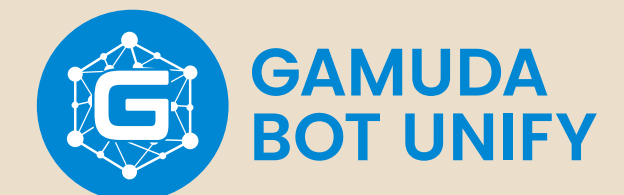
Gamuda reinforced its dedication to OSH by hosting benchmarking sessions for DOSH and ASEAN delegates under the Third Country Training Programme (TCTP) 2024. This initiative focused on sharing and benchmarking best practices in OSH management across ASEAN countries, showcasing Gamuda's commitment to fostering regional excellence in safety standards. The representatives from the ASEAN countries included Indonesia, Cambodia, Sri Lanka, Bangladesh, Nepal, The Philippines and Timor-Leste. The agenda featured a scale model briefing on Gamuda Cove development; presentations on Gamuda Land's digital, safety, health, and environmental best practices; a construction project site visit for OSH risk assessment training hosted by Gamuda Building Unit (GBU) and Gamuda Industrialised Building System (GIBS) teams and a tour of the wetlands. The event saw the participation of 25 attendees, including officers from DOSH HQ.

ADVANCING INNOVATION AND SAFETY THROUGH TECHNOLOGY

Gamuda's employees are reaping the benefits from AI advancements such as the 'WTP Quality Assistant', an AI-powered chatbot built on Google's Gemini platform launched by the Quality Team. This innovative tool streamlines project-specific quality searches, providing answers to both process-related (e.g., subcontractor onboarding) and product-related (e.g., concrete crack repair) queries. Additionally, this chatbot is set to perform trend analysis with provided data, underscoring the Quality Team's dedication to AI-driven developments.



Meanwhile, the QSHEplorer Bot, developed by the QSHE and Gamuda Excellence Transformation (GET) departments provides employees with a centralised hub for all essential management system documents, guidelines, regulations and past project documentation.



INNOVATION AND INDUSTRY LEADERSHIP



Gamuda shapes industry standards and fosters sustainable development through strategic participation and technological leadership. At AusRAIL 2024, Gamuda Australia engaged in discussions with industry leaders, policymakers, and rail experts to explore the latest trends and innovations in rail infrastructure reinforcing their commitment to sustainable rail connectivity. Moreover, Gamuda showcased the autonomous Tunnel Boring Machines (TBMs) at the Defu Station and Tunnels MRT Cross Island Line (Phrase 1) project in Singapore, demonstrating their impact on efficiency and collaboration to the Minister of Works.



At the Penang International Green Conference and Exhibition (PGIGCE) 2024, Gamuda underscored its sustainability leadership by presenting the Silicon Island Development and its innovative '15-Minute City' model, emphasising carbon reduction and smart transit. We further solidified our commitment to fostering advanced communities through collaborations with government officials and industry leaders, evident in our participation at the IEM Sabah 46th Anniversary Dinner and the MBAM OneBuild Exhibition 2024, cultivating strong industry partnerships.



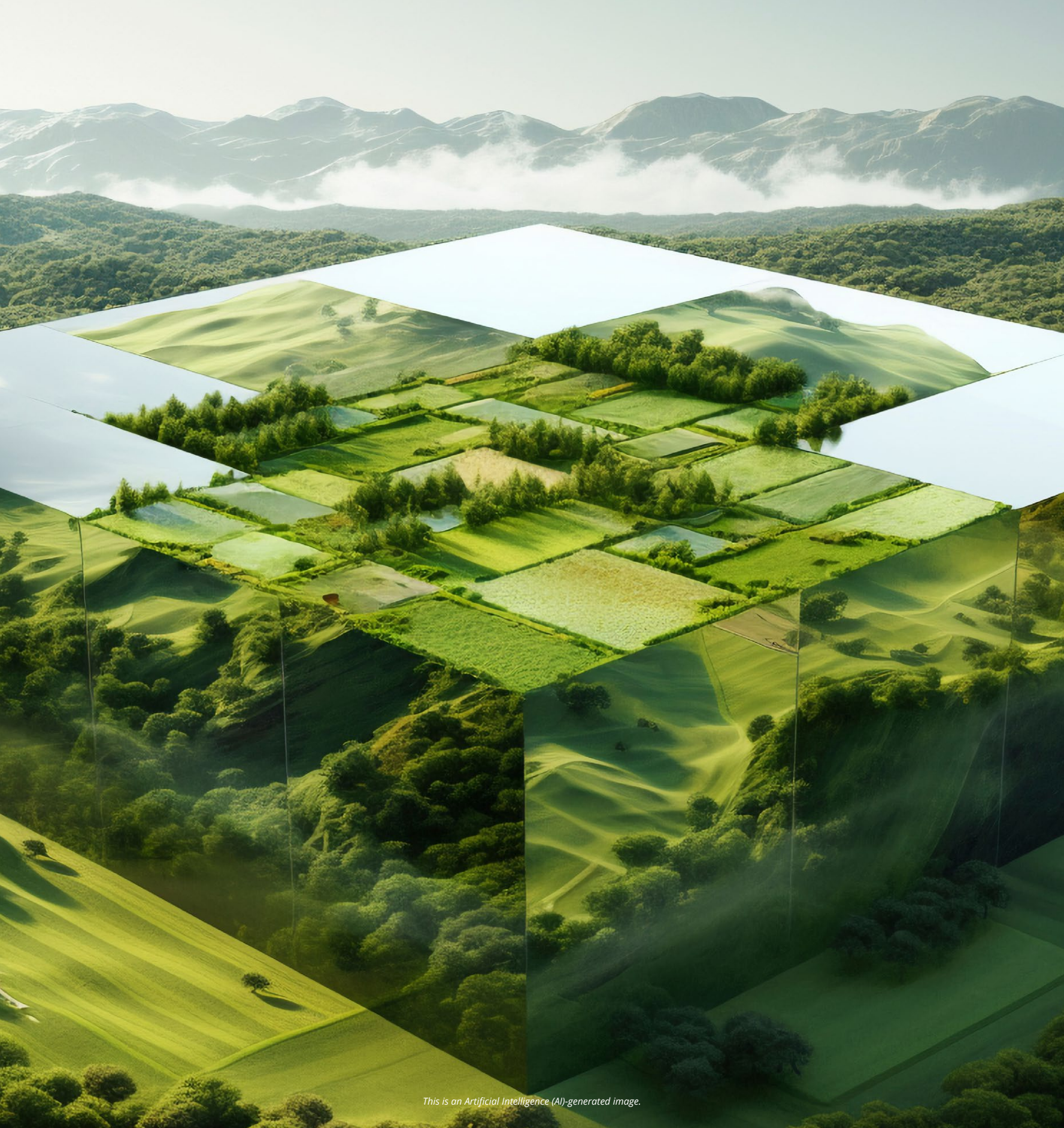
GAMUDA AI ACADEMY

Gamuda marked a major milestone in digital innovation with the launch of the Gamuda AI Academy, Malaysia's first AI-focused training programme in the construction sector. Developed in collaboration with Google Cloud, the academy aims to accelerate Malaysia's digital transformation by nurturing a new generation of AI professionals. Leveraging Gamuda's industry expertise and Google's technological capabilities, the initiative supports national goals to build a high-skilled, digitally empowered workforce and position Malaysia as a global hub for AI and innovation.

The academy offers a three-month, fully sponsored programme, open to students, graduates, professionals, and start-up founders aged 40 and below. Its curriculum covers full-stack AI development, including front-end, back-end, and AI technologies. Participants benefit from hands-on experience through labs, lectures, and projects, and gain access to advanced learning resources such as Google Cloud Skills Boost and Gemini Code Assist. The programme also includes mentorship by industry experts, networking opportunities, and modules on communication, innovation, and career development, equipping learners with both technical and professional competencies.

The first cohort, launched in September 2024, included participants from diverse backgrounds, including neurodivergent individuals supported by the Enabling Academy. Graduates have already begun applying their skills to drive innovation across construction and related industries. With continued support from its collaborators, the Gamuda AI Academy is set to play a pivotal role in advancing Malaysia's digital economy, strengthening the local talent pipeline, and contributing to the nation's long-term goal of becoming a technology-driven, high-income country.





This is an Artificial Intelligence (AI)-generated image.